



PEACEMAKER NATIONAL TRAINING CENTER STANDARD OPERATING PROCEDURES

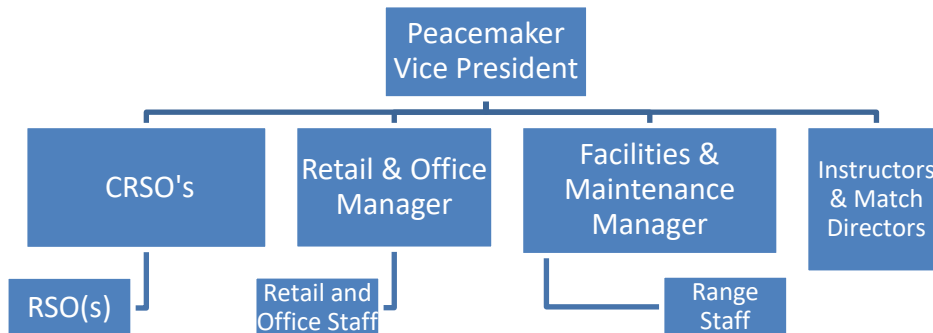
1624 Brannons Ford Rd, Gerrardstown WV 25420

1 Preamble

The Peacemaker National Training Center, LLC was founded in 2010. The company's mission is to provide a national level shooting sports complex and training center to paying members and, in some cases, the public.

2 Organization Chart

The Peacemaker National Training Center, LLC Organization Chart is as follows and is subject to change:



3 Complex-Wide Rules

Peacemaker National Training Center is a large shooting sports complex with general rules which apply at all times regardless of location. **FAILURE TO ABIDE BY THESE RULES MAY RESULT IN CONSEQUENCES NOT LIMITED TO: REPRIMAND, REMOVAL OR A LIFETIME BAN FROM THE PEACEMAKER NATIONAL TRAINING CENTER.**

These complex wide rules are as follows:

NRA Gun Safety Rules

- 1) ALWAYS keep the gun pointed in a safe direction.
- 2) ALWAYS keep your finger off the trigger until ready to shoot.
- 3) ALWAYS keep the gun unloaded until ready to use.

Administrative Rules

- 1) All members, guests, and public shooters will check in and out at the Peacemaker Headquarters Building leaving a government issued photo ID. This ID will be returned upon check out.
- 2) All persons accessing the range for the first time must watch the PNTC safety video. In the event the safety video is updated all persons will be required to watch the updated safety videos.
- 3) ABSOLUTELY no alcohol is permitted on Peacemaker National Training Center (PNTC) property. The PNTC Vice President may exclusively make exceptions to this rule for special events when firearms are not in use at PNTC.
- 4) Intoxication in any manner, for any person, anywhere on the PNTC complex is strictly prohibited.
- 5) No shooter or their guest may use or possess a firearm if they have been legally prohibited from using or possessing a firearm.
- 6) PNTC does not permit convicted felons on the property for any reason. Any person found to be a felon attempting to access PNTC property will be removed from the property and PNTC will notify law enforcement immediately.
- 7) All persons will sign a Peacemaker National Training Center liability waiver before accessing the complex. Each person is required to sign the appropriate PNTC hold harmless waiver/s prior to accessing the PNTC complex and/or as directed by PNTC staff.
- 8) Member ID Badges are to be worn at all times on the complex. Non-Members will wear appropriate ID wrist bands at all times. All shooters and guests must check in with the RSO on each range prior to shooting.
- 9) ALL Range Safety Officers, Chief Range Safety Officers, Staff, Instructors, Volunteers are REQUIRED to use the D-Lead or Lead removing soap provided at the PNTC headquarters after using or being on the ranges or on the PNTC complex.
- 10) Leashed pets for members and official service dogs may be permitted on the property. Members must announce their pets at the front desk. PNTC reserves the right to remove leashed pets from the property as needed.
- 11) No person other than Peacemaker National Training Center staff or authorized volunteers shall be on the property during "non-operational / closed" times. Hours will be posted at the Peacemaker National Headquarters Building and on the company website.
- 12) Smoking is prohibited in the headquarters building or on the firing line.
- 13) Minors under 10 years of age are NOT permitted on the complex except by special permission of a CRSO with an accompanied waiver.
- 14) For minors accessing the complex, the minor's legal guardian must sign the Peacemaker National Training Center minor release form prior to their child accessing the premises. All minors must be accompanied by a guardian and or a responsible adult at ALL TIMES.
- 15) Minors and their accompanied adult will be immediately removed from the range complex in the event that the minor is unaccompanied and/or exhibits unsafe or disruptive behavior.
- 16) All persons shall not exceed 15MPH on complex roads.
- 17) PNTC reserves the right to remove and permanently ban any member, non-member or guest without refund for violent, inappropriate, rude, unusual, disorderly, insubordinate, and/or intoxicated behavior.

- 18) Non-Peacemaker instructors are prohibited from conducting any training without prior PNTC approval.
- 19) The SOP can and will change from time to time. SOP / Rules will be available upon request in the Peacemaker National Training Center Headquarters and on www.peacemakernational.com All shooters should frequently review the SOP for updated policies and procedures.

General Range Rules

- 1) Safety is everyone's responsibility. All shooters have an obligation to police their neighbor and help them follow all safety rules. Please report any safety violations to an RSO and/or Peacemaker staff immediately.
- 2) All persons must wear a brimmed hat, hearing and eye protection at all times when on or near a firing line.
- 3) All persons must wear appropriate clothing and footwear.
- 4) ONLY Qualified PNTC employees may operate or be near the operation of heavy equipment.
- 5) Shoulder holsters and cross-draw carry holsters may not be used at any time on the complex.
- 6) Unsafe use of cell phones while on the firing line is prohibited.
- 7) All persons shall not leave the complex roadways except in designated parking, picnic, or range areas. "Exploring" at Peacemaker National Training Center is HIGHLY PROHIBITED.
- 8) Peacemaker National Training Center is NOT a hot range. No person other than PNTC staff and volunteers or uniformed "on duty" law enforcement personnel will be permitted to carry a loaded firearm outside of the PNTC HQ building or PNTC HQ parking area. All persons will ONLY LOAD at the firing line when instructed to do so by the RSO in charge on each range. No person shall wear a concealed, non-concealed, or a holstered firearm off the firing line of any range without CRSO permission. The PNTC Vice President may permit a hot range environment by special exception as needed.
- 9) Non-Members are NOT permitted to draw from a holster at PNTC. Exceptions are made for official PNTC competitions, training and/or some special events.
- 10) Firearms, if brought into the Headquarters building, other than legally concealed or legally open carried firearms, must be unloaded and cased.
- 11) PNTC requires the use of chamber flags for long guns on all ranges and during all matches and training courses. The PNTC Vice President may permit exceptions for training purposes. The Homeplace range will require chamber flags in all shotguns other than in break action shotguns
- 12) Fully automatic firearms are NOT permitted at Peacemaker National Training Center unless specifically approved by the PNTC Vice President. Shooters utilizing all other NFA items must have appropriate NFA paperwork in their possession.
- 13) PNTC does not permit the use of 50 BMG, .416, .408 caliber rifles except by special permission for special events and may only be granted by the PNTC Vice President.
- 14) 338 caliber (and larger) magnums are NOT to be shot on PNTC steel target systems closer than 1000 yards.
- 15) Tracer and incendiary projectiles are prohibited. Any projectile sticking to a magnet may NOT be shot at steel targets.
- 16) **All persons shall obey the commands of the Peacemaker Staff, RSO's, CRSO's, Instructors, and/or Match Directors at all times.**
- 17) No person shall cross fire at targets not in their specific lane.
- 18) No person shall ever fire at wildlife.
- 19) No person shall ever fire over a backstop.
- 20) Shooters may only bring paper targets to PNTC. All other target systems utilized will be those which are provided by PNTC.

- 21) No shooter will set, move or adjust the setting of steel targets at PNTC.
- 22) No Shooter will place paper targets without the supervision of a PNTC RSO, CRSO or PNTC Employee.
- 23) No Shooter will attempt to place targets outside of PNTC designated range areas.
- 24) The RSO may conduct a brief inspection of the shooter's equipment and ammo prior to allowing access. A range safety briefing may also occur at this time.
- 25) PNTC Staff may occasionally direct Volunteer RSO's for various reasons. All Volunteer RSO's are to obey PNTC staff. If an Volunteer RSO objects or has a question the Volunteer RSO is to radio for the PNTC CRSO or front desk for confirmation.
- 26) Food, beverages and/or smoking is prohibited while on the firing line.
- 27) All shooters are subject to a "magnet test" of their ammo before firing on PNTC steel. If any part of the projectile sticks to a magnet, that ammunition will not be allowed to be used on steel targets.
- 28) The PNTC CRSO may, at any time, make any necessary rule adjustments that are in the best interest of PNTC and/or overall safety.
- 29) An ammunition speed limit of 3,150 feet per second shall be in effect when shooting on steel target systems.
- 30) Shooters are to check in with the RSO prior to removing any items from their vehicle. This allows the RSO to perform a safety briefing and direct the shooter to the appropriate location.
- 31) Any person found to be cheating in competition, training or any other activity at PNTC is subject to immediate expulsion from the PNTC complex and may face suspension and/or a lifetime ban from PNTC.
- 32) Any person found to be stealing will is subject to immediate expulsion from PNTC and may face criminal charges.
- 33) Any person found to be trespassing or attempts to access or use the PNTC complex after hours may face immediate expulsion from PNTC, suspension and/or a lifetime ban from PNTC and may face criminal charges.

Warnings, Safety Counseling, Suspension and/or Expulsion

- 1) In the event that any person is observed and/or violates the PNTC range rules, they may be subject to warnings, range safety counseling, suspension and/or a lifetime ban from PNTC. Safety counseling will be required with any person receiving two minor safety violations or a single major safety violation. Safety counseling also may be required at any time as needed. For safety purposes, warnings, suspensions and/or removal from PNTC may occur at any time as needed.
- 2) **Minor safety violations are listed below but are not limited to:**
 - Not wearing eye and/or ear protection
 - Not wearing a brimmed hat
 - Using a cell phone or mobile communications device on or in an unsafe manner near the firing line
 - Not using a chamber flag
 - Using or attempting to use prohibited ammunition
 - Ignoring range safety officer commands
 - Shooting a range floor
 - Attempting to move or place PNTC targets to include steel targets
 - Not checking out at PNTC Headquarters (competition shooters are not required to check out)
 - Attempting to access an unauthorized range or area

- For Liberty ranges shooters with slung AR-Style rifles, no one will stay loaded and break the 180 degree downrange plane at any time with a rifle.

3) Major safety violations are listed below but are not limited to:

- Not checking in at PNTC headquarters
- Refusal to obey range safety officers, PNTC employee, match director, match official or instructor.
- Profane disrespect to an employee, match director, match official or instructor.
- Unsafe or irresponsible firearm handling to include muzzling and/or unsafe holstering or draw
- Shooting high on a berm and/or over a berm/impact area
- Handling a firearm while anyone is downrange
- Breaking the 180 degree downrange plane with a handgun or rifle or shotgun.
- Handling an uncased firearm at a vehicle
- Wearing or bringing a loaded firearm off the line
- Shooting Steel with a rifle closer than 100 yards
- Unauthorized use of a range
- Bringing and or using unapproved steel or other unapproved targets. Paper / cardboard targets are the only targets members or guests may use at PNTC
- Attempting to conduct business as an unauthorized firearms trainer on the PNTC Complex
- Permitting your guest/s to draw from a holster when not in a competition and/or as part official PNTC training.
- Use of inappropriate aggressive behavior

4 Range Specific Rules (in addition to complex-wide rules)

Independence Range Rules:

The Independence range is a public and private range for pistol, rifle and shotgun sighting-in use.

- 1) Wearing a holstered handgun or drawing from a holster is NOT permitted on the Independence range.**
- 2) No rifle ammo of any kind will be used in the Independence pistol range area except by permission of a PNTC CRSO.
- 3) Handguns capable of firing shot shells will only fire slugs at paper targets. Only shot size #7 ½ or smaller or #6 steel may be fired into the berm for “patterning.”
- 4) Handguns are to be used on the 25 yard handgun area. Scoped Hunting handguns may be used for sighting on the rifle range out to 100 yards. A PNTC CRSO may permit the use of various scoped handguns for use at 200 and 300 yards at certain times.
- 5) All handguns will be cased and uncased and on the staging table in the pistol area with open actions
- 6) All handguns will be fired from behind the staging tables in the pistol area.
- 7) All non-shooters must remain to the rear of the Independence range firing line and also obey RSO instructions at all time.
- 8) When not shooting and not in immediate control of their firearms, shooters will open actions and insert chamber flags.
- 9) For the rifle area on the Independence range, firearms will be uncased on OR DIRECTLY NEXT TO the shooting benches.

- 10) When the range is designated as "cold", all shooters will open actions, remove magazines, insert chamber flags, stand back from the firing line and not handle firearms.
- 11) No shooter will place paper targets beyond 100 yards without CRSO permission.
- 12) Shotguns will only fire slugs at paper or steel targets. Only shot size of #7 ½ or smaller or #6 steel may be used only when "patterning" into a berm.
- 13) No shooter, member, competitor guest, RSO, CRSO or staff member is to remove or tear down the PNTC retaining walls in front of the 200 & 300 yard firing area.
- 14) Prone firing is prohibited from the 200 & 300 yard firing area.

Homeplace Range Rules:

The Homeplace Range is the Trap, Skeet, Sporting Clays & 5-Stand Range area at PNTC.

- 1) No more than two shells may be loaded into any shotgun at any time.
- 2) No shooter shall load until it is their turn and they are on the firing station.
- 3) All shooters will keep their action open at all times when not on the firing line.
- 4) No rifle or handgun, regardless of type of ammunition, may be used.
- 5) No shot larger than #7 ½ lead or #6 steel is allowed.
- 6) Only clay targets may be used on the shotgun fields.
- 7) All rounds or partial practice rounds must be reported and paid for at the Headquarters.
- 8) Only qualified PNTC RSOs or qualified PNTC staff are to adjust, load and/or repair range equipment.
- 9) Only legal modern 12, 16, 20, 28, and .410 gauge shotguns may be fired.
- 10) Shooters may not advance to the next station until all shooters in the group have completed the current shooting station.
- 11) Shooters in waiting and spectators must be in the safety zone behind the current station. Shooters and spectators may not be on the walkways between shooting stations during any shooting activity. Spectators may also observe from the shelter or well behind each shotgun range.
- 12) The use of any shotgun field shall be limited to 30 minutes or one regulation round of skeet/trap/5-stand if groups are waiting to use the range.
- 13) Shooters are responsible to clean up the range when shooting has completed. All hulls must be removed from the range surface and disposed of in an appropriate manner.

Liberty Range Rules:

The Liberty Range Area is series of pistol, shotgun and rifle ranges primarily for matches, member use, member guests and for private organizations.

- 1) Only members and member guests or properly registered competitors may use the PNTC Liberty Range.
- 2) **NO MORE THAN FOUR (4) persons may use one Liberty range bay at any time. If more than one person fires at one time they must be on the same line of fire and not staggered.**
- 3) Only authorized members may draw from a holster for recreational use on the Liberty range. To become authorized to draw from a holster on the Liberty range, a member must apply, complete and pass a "Peacemaker Handgun Competency Evaluation." Range Offices or PNTC staff may stop a shooter from drawing at any time for safety purposes, even after the shooter has obtained / passed the "Peacemaker Handgun Competency Evaluation."
- 4) Non-Members are NOT permitted to draw from a holster at PNTC. Exceptions are made for official PNTC competitions, training and/or some special events.

- 5) All shooters will use standard handgun calibers and rifles will be permitted up to .308 calibers. Other calibers require CRSO approval.
- 6) No shooter will not shoot steel with rifles in the Liberty ranges.
- 7) No shooter will shoot steel with rifles closer than 100 yards.
- 8) Pistol caliber carbines on steel may be used **NO CLOSER THAN 10 YARDS!**
- 9) Any shooter damaging steel from firing unapproved handgun, shotgun or rifle ammunition shall be immediately responsible to replace the full retail value (including shipping) of the steel. This also applies to shooters firing rifle ammunition closer than 100 yards.
- 10) Shooters will not shoot steel with a pistol closer than 10 yards and 100 yards with a rifle cartridge.
- 11) Shooters may not shoot the 5.7 Cartridge on PNTC steel
- 12) Some changes to steel shooting distance minimums for training or competitions may, on occasion, by permission of an officially approved PNTC CRSO, be changed.
- 13) Shotguns may be used on select Liberty ranges and in accordance with RSO directions.
- 14) Shotgun slugs will not be shot on PNTC's Liberty range steel targets. Slugs may only be fired at paper.
- 15) Shooters shooting on Bianchi Targets Systems **MUST** shoot only approved Peacemaker purchased cardboard.
- 16) All firing must be conducted from inside each Liberty range bay. Firing from beyond the side berms is prohibited.
- 17) All non-shooters/spectators must remain behind the Liberty range bay firing lines and in accordance with the RSO instructions.
- 18) Shooters slinging rifles must have magazine out and chamber flag inserted when not firing. Shooters with rifles **WILL NOT** stay loaded and break the 180 degree downrange plane at any time. Rifles must be pointed down range unless a chamber flag is inserted.
- 19) **Shooters will fire one at a time, in a bay at a time unless a static firing line is in place. NO PERSON WILL AT ANY TIME BE IN FRONT OF A PERSON SHOOTING, LOADING OR MANIPULATING A FIREARM.**
- 20) **All shooters in a bay will remain behind a proper firing line and will not handle firearms while a shooter is down range!**
- 21) No shooters or guests or members or competitors or Range Safety Officers will place or move PNTC steel. Only CRSO's, match directors or qualified PNTC staff are permitted to move PNTC steel.
- 22) No shooter will move paper targets or paper target frames into an unsafe area. Anyone desiring to move a paper target frame will gain approval from the Liberty Range Safety Officer.
- 23) No shooters or guests or members or competitors bring or use their own steel targets or target frames.
- 24) Bays/areas may, at times, be designated for specific firearm use only based upon the target systems deployed in that particular bay/area. ie: A bay/area may be deemed pistol only if only pistol targets are present.

Patriot Range

The Patriot Range is a highly-specialized 1000 yard rifle range. Access to every member or guest is not a right and each shooter firing on this range **MUST** pass a "Peacemaker Patriot Certification Process" and maintain their privilege to shoot on this range through abiding by the below Patriot range rules.

- 1) All shooters will prove their rifle system shoots a one minute, or better, five-shot group at 100 yards. Shooters will report to the Independence range to conduct a "proof group" – This group will be signed by the Independence RSO and brought to Peacemaker HQ for completion of the Patriot certification.

- 2) All shooters will have their approved Patriot certification ready to present to the Patriot RSO upon arrival at the Patriot range.
- 3) All shooters will have their rifle "zero'd" at 100 yards at 700 feet above sea level.
- 4) All shooters, with their elevations on "zero", will fire a "sighter" shot at a 100 yard target verifying that the shooter's rifle system is functioning properly.
- 5) All shooters will shoot from the PRONE or BENCH position. No other positions for shooting are permitted on the Patriot Range unless approved by a CRSO.
- 6) No shooter will make a significant elevation adjustment unless checked and approved by the Patriot RSO.
- 7) No shooter will "hold off" for elevation - all shooters WILL DIAL elevations.
- 8) The RSO will check and approve the shooters elevation table and specific elevation prior to loading.
- 9) Failure to have the 100 yard "sighter" shot impact the correct target after 3 attempts will prevent the shooter from shooting on the Patriot range. Shooters must leave the Patriot Range and resolve their zero or rifle issues before returning to fire on the Patriot range.
- 10) The Patriot range will close when winds continually exceed 25MPH and/or when weather conditions become too difficult for most shooters certified on this range.
- 11) Spectators will be permitted on the Patriot range but must remain behind the firing line and outside the shooting pavilion. Spectators must also not be loud and/or disruptive.